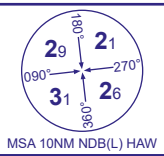
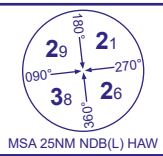


STANDARD INSTRUMENT DEPARTURE - ICAO

HAWARDEN

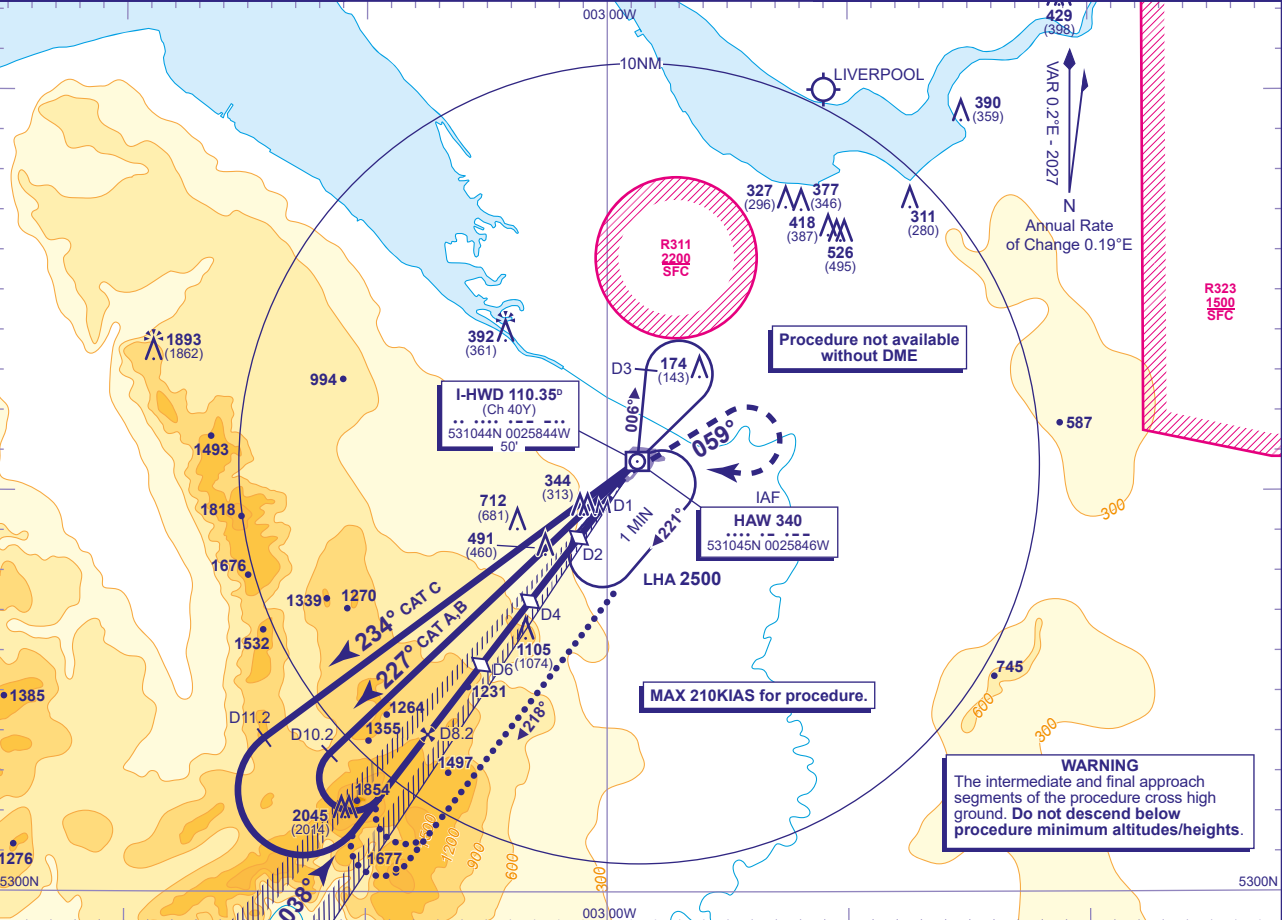
OFFSET
LOC/DME/NDB(L)
RWY 04
(ACFT CAT A,B,C)



TWR 124.955	HAWARDEN TOWER
RAD 120.055, 130.015*	HAWARDEN RADAR
ATIS 125.430	HAWARDEN INFORMATION
*As directed by ATC, Not continuously monitored	

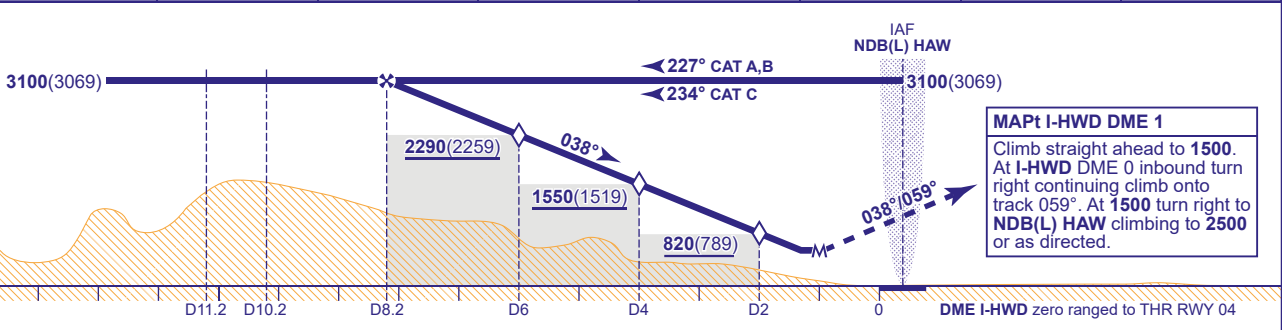
AD ELEVATION	45
THR ELEVATION	31
OBSTACLE ELEVATION	2045 AMSL (2014) (ABOVE THR)
BEARINGS ARE MAGNETIC	

TRANSITION ALTITUDE	5000
---------------------	------



RECOMMENDED PROFILE Gradient 6.1%, 370FT/NM

DME I-HWD	8	7	6 (SDF)	5	4 (SDF)	3	2 (SDF)
ALT(HGT)	3030(2999)	2660(2629)	2290(2259)	1920(1889)	1550(1519)	1190(1159)	820(789)



Aircraft Category		A	B	C		Rate of descent	G/S KT	160	140	120	100	80	
OCA (OCH)	Procedure	650(619)	650(619)	650(619)			FT/MIN	980	860	740	610	490	
VM(C)OCA (OCH AAL)	Total Area	800(755)	900(855)										
	East of RWY 04/22	700(655)	800(755)	1500(1455)									

ALTERNATIVE PROCEDURE
Overhead NDB(L) HAW at 3100(3069) turn right and continue the outbound leg of the hold then turn left onto track 218°. At I-HWD DME 10.2 (CAT A,B) or I-HWD DME 11.2 (CAT C) commence right turn to establish on the localizer then continue as for basic procedure. Remain within I-HWD DME 15.

NOTE 1 LOC is offset 2.6° right of RWY 04 C/L and intercepts the RWY C/L 1NM from the THR.
2 Reversal baseturn from NDB(L) HAW outbound on QDR 006° to I-HWD DME 3 (1 MIN).

CHANGE (11/25): MSA INCREASES 25NM SE/SW QUADRANT, 10NM SE QUADRANT. OCA(OCH). MAG VAR.